

Quick Start Guide How to Communicate INR Results

There are two options to send your INR results to the WCR Advantage App:



Establish initial Bluetooth connection (pg. 2)

Skip this step if you have **previously setup the Bluetooth connection** with your iOS or Android device and go straight to Connecting to WCR Advantage App to Sync Readings (pg. 5)



Alternate option: Connect to Wifi to sync readings (pg. 6)

Use this option only if you cannot connect to Bluetooth.

Quick Start Guide

How to Communicate INR Results Using Bluetooth

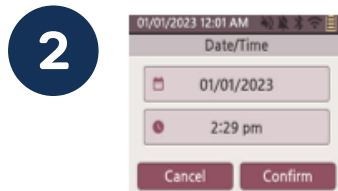
Establishing Initial Bluetooth Connection

Skip this step if you have previously setup the Bluetooth connection



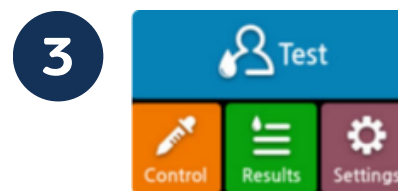
1

Ensure that device is charged.



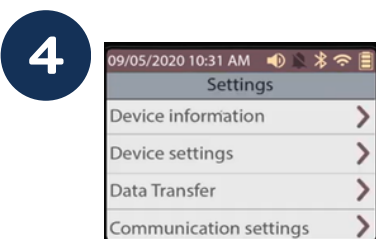
2

Ensure that date/time are set and correct.



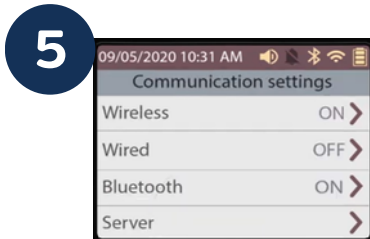
3

From the Home screen on your device, select 'Settings'.



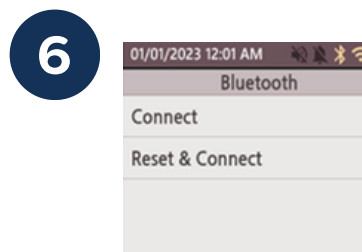
4

Settings screen will display. Press 'Communication settings'.



5

Communication settings screen will display. Press 'Bluetooth' on the display screen.



6

Press 'connect'.



7

Follow **iOS** or **Android** steps to connect to the Coag-Sense® Meter. A **Bluetooth broadcast success pop-up** shows that Bluetooth should be connected.



8

Press the **icon** pictured here to return to the home screen.

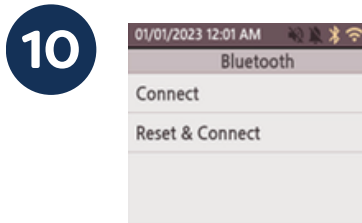


9

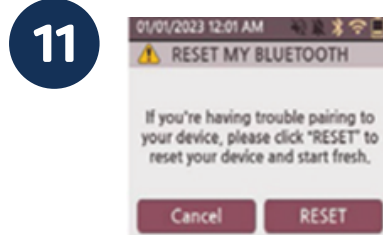
If you receive this message, **Bluetooth Broadcast Fail pop-up**. Troubleshoot when the phone has a Bluetooth pairing problem.

Quick Start Guide

How to Communicate INR Results Using Bluetooth



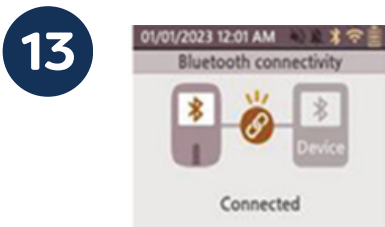
Reset and connect cell. Reset Bluetooth paired devices a **pop-up Broadcast Bluetooth** will pair the Coag-Sense® PT/INR Meter to an external device.



Set the external device ready to connect to the PT/ INR meter.



Broadcast Bluetooth



Bluetooth broadcast **success** pop-up. Bluetooth should be connected.



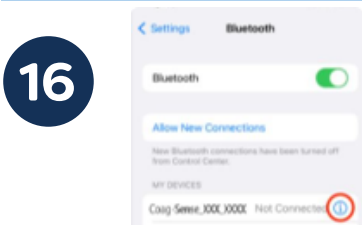
Press the icon pictured here to return to the home screen.

For iPhone

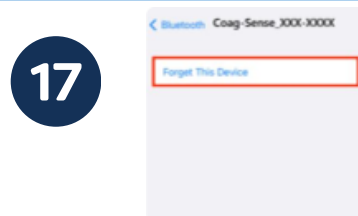


Check settings to see if iPhone has **Bluetooth ON**:

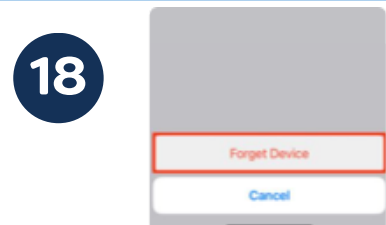
- Open **Settings**
- Tap **Bluetooth**
- Toggle **Bluetooth ON** (the switch turns **green**)



- Under Other Devices, tap the name of the device. Ex: **Coag-Sense_XXX_XXXX**
- Wait for it to move to My Devices and show Connected.
- If you see it and it's listed as **"Not Connected"**, click on the **blue** circled **"i"** next to the device name



Click **"Forget This Device"**.



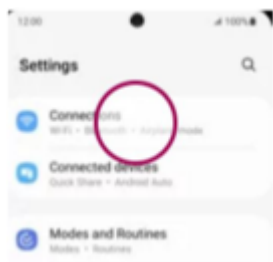
Click **"forget device"** in the pop-up window. Repeat steps 3-16.

Quick Start Guide

How to Communicate INR Results Using Bluetooth

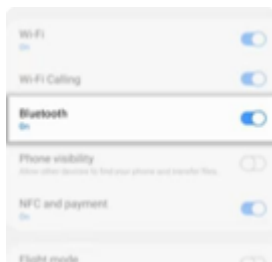
For Android

19



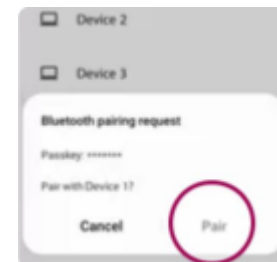
Check **settings** to see if Android has Bluetooth **ON**. To turn on Bluetooth, navigate to and open **Settings** on your phone or tablet, and then tap Connections.

20



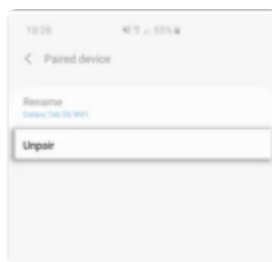
Tap **Bluetooth**, and then toggle switch to turn it on.

21



- Select '**Pair New Device**'.
- A popup window should appear asking to connect to the name of the device. Ex: **CoagSense_XXX_XXXX**. Select '**Pair**'.
- If this screen appears, verify the code and choose Pair. If this screen does not appear, enter the PIN code of the selected Bluetooth device and choose **Pair**.

22

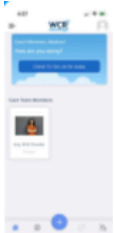


- Wait for it to move to Paired Devices and show Connected.
- If you see it and it's listed as "**Not Connected**", click on the gear icon next to the device name
- Select '**Unpair**'
- Repeat the steps 3-14 and the Android specific steps 19-21.

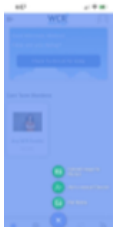
Quick Start Guide

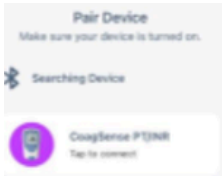
How to Communicate INR Results to WCR Advantage App

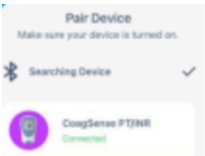
Connecting to WCR Advantage App to Sync Readings

1  Using an iOS or Android device, open the **WCR Advantage app**. If you are not logged in, login with the credentials you created when onboarded.

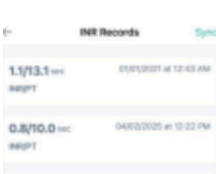
Navigate to the **Home** screen by pressing the **'House'** icon. Press the **'+'** icon.

2  Ensure your device is in range of your phone. Press **'Pair Device.'**

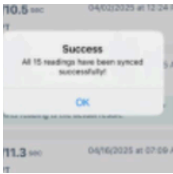
3  Select the **'CoagSense PT/INR'** device from the device options. You will see a **'Connecting'** message.

4  Once connected, there should be a green **'Connected'** designation under the screen.

Note: A pop-up window may appear with a Bluetooth pairing request. *"Coag-sense would like to pair with the iPhone or Android."* Enter the code on the Coag-sense device.

5  The INR Records will appear.

Click on the green **'Sync'** button in the top right hand corner.

6  A success pop-up window will appear and all ## readings have been synced successfully.

If it does not pair successfully, it will say failed. Simply click **cancel**. Connect and reset. And then repeat steps **15-21**.

7 Turn the meter **OFF** by pressing and holding the **POWER** button when you are finished testing. If left unattended for a set time (User preferred setting), the meter powers itself **OFF**.

Quick Start Guide

How to Communicate INR Results Using Wifi

Alternate Option: Connecting to Wifi to Sync Readings

Use this option if you cannot connect to Bluetooth

1

After testing is complete, navigate to the **Home** screen.

2

Settings screen will display. Press **'Communication settings'**.

3

Communication settings screen will display. Press **'Wireless'** on the display screen.

4

This screen displays icons that:
 a) Scan for Wireless networks nearby
 b) Wireless ON/OFF icon
 Toggle Wi-fi ON. Press your desired Wi-Fi network from the list. Press **'Connect'** icon and input the passphrase (Wi-fi Password) to connect to the network.

5

Press the icon pictured here to return to the previous screen.

6

Communication settings screen will display. Press **'Server'** on the display screen.

7

Input the below values for the IP address and port. Press **'Connect'**.
 IP address: 100.25.125.137
 Port: 9000

Note: A loading screen will appear and then will return to the Server display screen.

8

Press the icon pictured here to return to the home screen.

9

Turn the meter **OFF** by pressing and holding the **POWER** button when you are finished testing. If left unattended for a set time (User preferred Setting), the meter powers itself **OFF**.

Please Note: This device is intended for use under medical supervision from your physician and results will be monitored by your LVAD care team. Do not make any changes in your treatment plan without consulting your physician for direction. If you are unable to reach your physician or LVAD care team, for any medical emergencies, call 911 or go to the nearest emergency room.

Disclaimer: Quick start guide instructions reference the Coag-Sense manufacturer Instructions For Use (IFU). A complete instruction Manual is included with each device for full reference and additional information can be found at <https://coag-sense.com/pt2/>